

A close-up, high-contrast photograph of a chair's backrest and seat. The chair features a dark, possibly black, frame and a light-colored, woven mesh fabric that covers the backrest and seat. The lighting is dramatic, highlighting the texture of the mesh and the contours of the chair against a dark background.

# Wake up Your Body

LOOP CHAIR

D00237



Claudio Francesco Bellini (1963) is living and working in Milan, where he graduated in Architecture and Industrial design at the renowned Politecnico university in 1990.

His strong fascination with creativity, is rooted in his early childhood years, inspired by his father Mario Bellini, whom counts as one of the most affluent figures in design history.

Today Claudio Bellini Design, recognized as one of the most influential European studios, is active within several fields of design, ranging from furniture to product and architecture, collaborating with leading companies worldwide including Walter Knoll; Steelcase; Poltrona Frau; Riva 1920. Many of its creations have received international design awards, among which the prestigious Red Dot, IF and Good design award.

Claudio Francesco Bellini (Italy)

A stylized, handwritten signature in black ink, likely reading 'Claudio Francesco Bellini'.

SOFT PAD  
WITH HIDDEN  
LUMBAR SUPPORT

SPECIAL  
ZONE FOR  
LOGOTYPE

NET FOR  
BETTER BREATHA-  
BILITY

HIDDEN ADJU-  
STABLE LUMBAR  
SUPPORT

FLEXIBLE NET


PLASTIC  
FRAME

TEXTILE PAD + PU  
WITH INNER LUMBAR  
SUPPORT

FOUR-D  
ARMREST

New and Innovative Design



A close-up, low-angle shot of a modern chair's backrest and seat. The chair features a dark, possibly black, frame and a light-colored, woven mesh fabric. The backrest is curved and tapers towards the top. The seat is also curved and appears to be made of the same mesh material. The lighting is dramatic, highlighting the texture of the mesh and the smooth curves of the chair against a dark background.

Clean Lines, Well-balanced Proportion





Comfort and Breathable





## Design Concept

The main concept is a combination of Mesh Backrest and Soft Pad in a new and innovative way. The mesh gives all the advantages of a light material such as comfort and breathable element to user's sitting experience.

Optional Soft Pad in a lumbar area provides extra sitting comfort sensations. Well refined balance between sharp each curving and contour angles. Elegant silhouette and visual lightness is a perfect addition for a modern offices.

## Performance

LOOP Chair characterized by sharp clean lines, well-balanced proportions, and functionality.

It has a soft pad lumbar support, 3D adjustable armrests and wide range adjustable headrest to provide better ergonomic application. The aesthetics of the chair was inspired by the dynamism of automotive design with mixture of smooth and sharp lines.

Various textile combinations and elegant design makes LOOP Chair suitable for all areas of offices as well as for use in the home office.





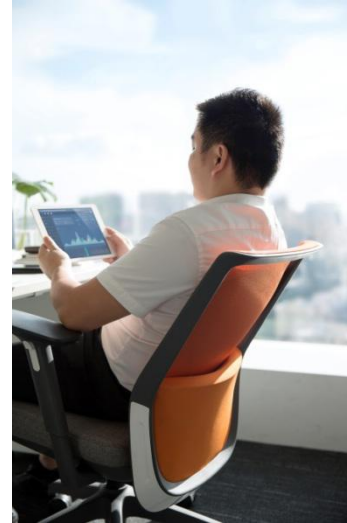




**Extreme Comfort**

## Posture Fit

In daily life and work, people sit in various postures. The ergonomic design of LOOP Chair fits all your postures, wide range adjustable headrest, 3D armrest, 22° back tilting mechanism and high elastic mesh make LOOP Chair more humanize and interactive, it fully supports your body and offers you the extreme comfort experience.







## Lean Back with Comfort

The mechanism options for LOOP Chair are synchron mechanism and DONATI-Dopo weight sensitive mechanism. Seat-slider is attachable for both mechanisms to fit various postures.



PU soft pad delivers gentle sense and comfortable feeling.



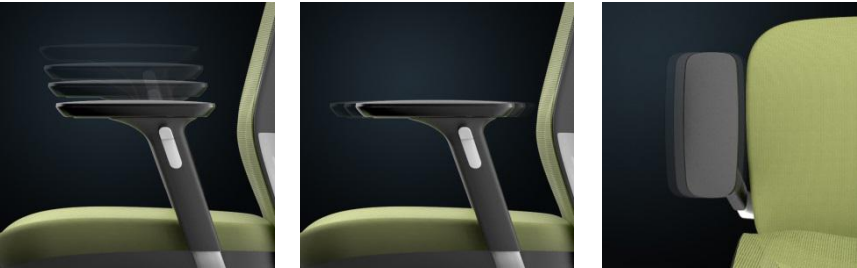
## Height-adjustable Headrest with 18 Locking Positions

The engineering purpose of the headrest was to provide a wide range of height adjustment for people from all different height and size. The particular feature of this design is that headrest can overlap the back and provide ultra support also for the shorter users. The visual image of the headrest is clean, smooth and elegant. It comfortably embraces your head and can be easily adjusted according to your needs. Triangle style of the headrest resembles LOOP Chair and creates recognizable family image.

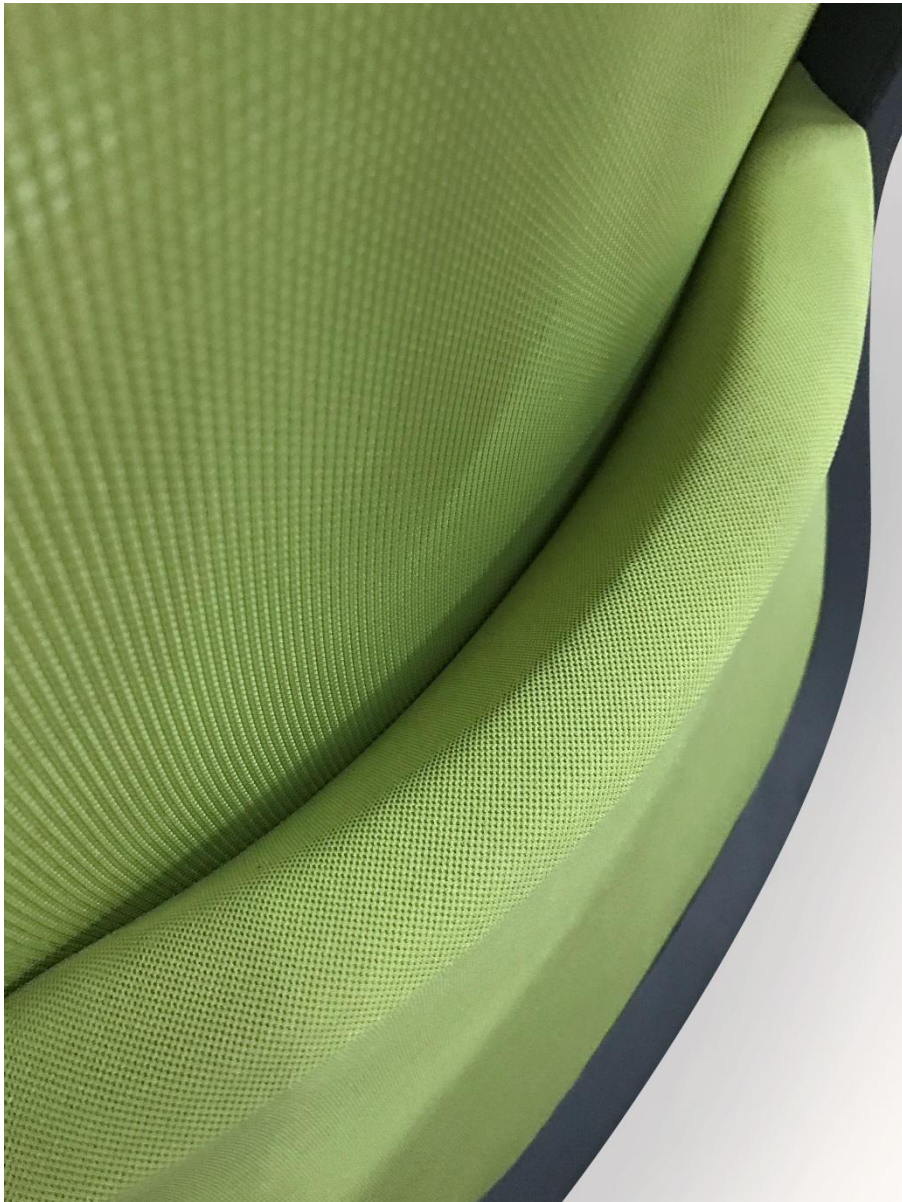


# 3D Armrest

It`s a breakthrough design for the construction of armrest support and interior device. It offers you the outstanding comfort experience with click rhythm and gentle feeling that soft PU pad provides .



- 9-position height adjustment (effective stroke:75mm)
- 7-position PU Pad forward and backward adjustment (effective stroke:40mm)
- 4-position PU Pad left and right adjustment (effective stroke:30mm)



## Hug Feeling Support

Refined ergonomic design

The incline lumbar support, 45 degree bevel cut and curving design provide you stability and comfort in back tilting position.





## Environment Friendly Mesh & Seat Foam

The seat foam is long lasting high intensity molded foam, offers extraordinary comfort.





## Craftsmanship

Embedded lumbar support seamlessly integrates with the mesh and back frame .The lumbar support is made of PP board and high intensity molded foam which make the lumbar support long lasting with great elasticity.

The decoration of gloss white painted plate with exquisite process for joint area combining with two different textures makes LOOP Chair more attractive.

## Colors

3 colors were selected for LOOP Chair . Grey is the most balanced neutral color, green and orange are hyper standout colors. This collection makes LOOP Chair more contemporary and fashionable that fits both open offices and modern home.

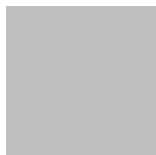


## Frame

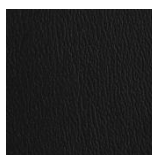


Grey Shell or Black Shell with white painting  
deco plus black name plate

## Headrest



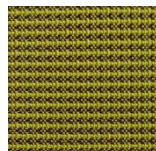
PU Headrest:  
PU0401/ Light Grey



PU0403/ Black

Option: Fabric Headrest, color  
options are same as lumbar  
support

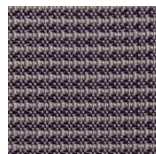
## Backrest



FB1902/Green



FB1901/Orange



FB1904/Grey



FB1905/Black

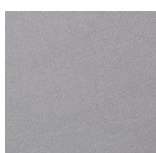
## Lumbar Support & Headrest



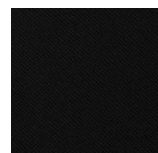
FC1707/Green



FC1702/Orange

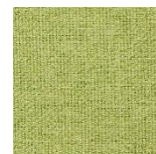


FC1708/ Grey



FC1709 /Black

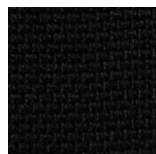
## Seat



FC1801/Green



FC1802/ Light  
Grey



FC2001/Black





# Flexible Solutions

## Armrest



Nylon Armrest/Grey & Black



Aluminum Armrest/White painting



fixed Armrest

## Base



Nylon Base/Grey & Black



Aluminum Base/White painting



Fixed Aluminum Base/White painting



Sled Base/Black painting

## Headrest (Removable )



Height-adjustable Headrest with 18 Locking Positions

## Mechanism (Interchangeable )

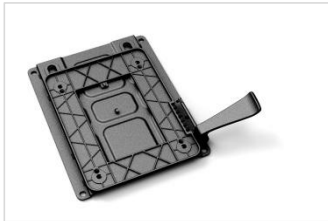


Synchron mechanism 22° tilting angle with 3 locking positions



DONATI-Dopo weight sensitive mechanism, 21° tilting angle with 3 locking positions

## Slider



6-position Seat Slider, attachable to both mechanisms

## Option:



Synchron mechanism 22° tilting angle with 3 locking positions, plus 6-position Seat Slider



## Various Versions



D00237SH  
Grey Shell



D00237SH  
Black Shell



D00237RM  
Grey Shell



D00237RM  
Black Shell

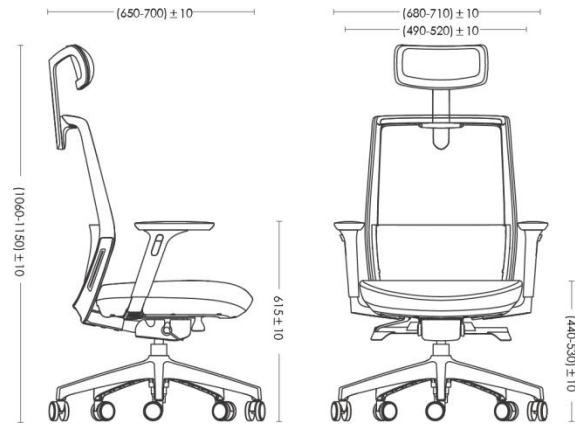


D00237RM  
Grey Shell



D00237E  
Black Shell

## Packing Details



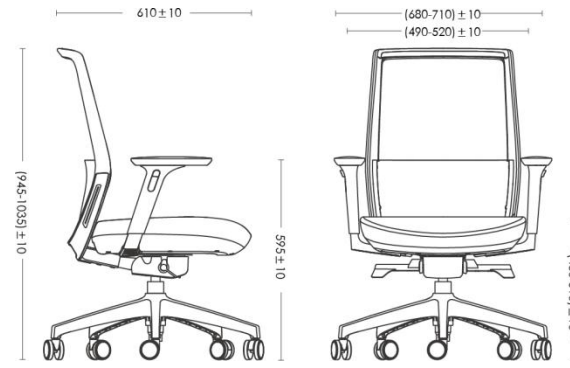
### D00237RH

**Carton Size:** 32"L\*12-3/4"W\*26"H CBM:0.17

**Packing:** 1pcs per carton

**N.W.:** 21.0KG **G.W.:** 23.6KG

**Loading:** 20GP:169PCS 40GP:348PCS 40HQ:400PCS



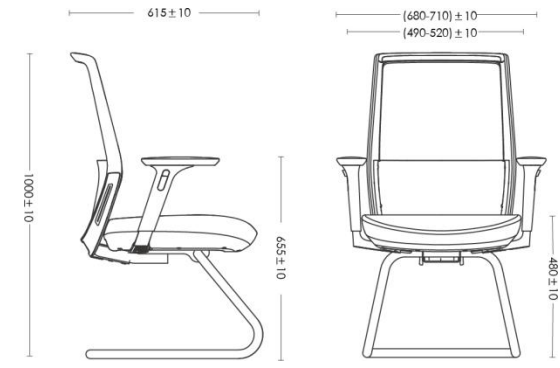
### D00237RM

**Carton Size:** 32"L\*12-3/4"W\*26"H CBM:0.17

**Packing:** 1pcs per carton

**N.W.:** 20.0KG **G.W.:** 22.5KG

**Loading:** 20GP:169PCS 40GP:348PCS 40HQ:400PCS



### D00237E

**Carton Size:** 27-1/2"L\*15-1/2"W\*21-1/4"H CBM:0.15

**Packing:** 1pcs per carton

**N.W.:** 16.1KG **G.W.:** 18.1KG

**Loading:** 20GP:192PCS 40GP:398PCS 40HQ:447PCS

